

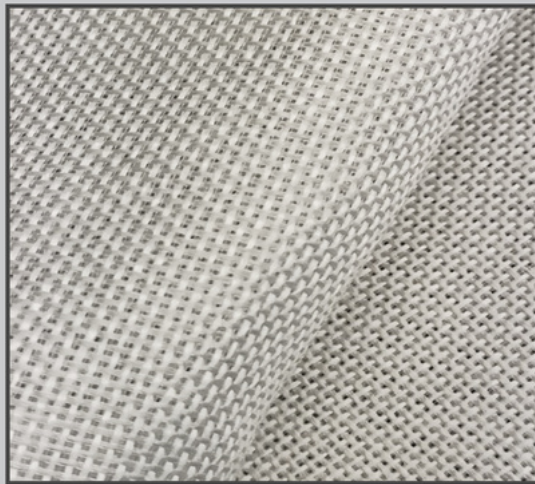
# KYOTO







KYOTO IVORY



KYOTO CREAM



KYOTO STEEL





KYOTO GREY



KYOTO LEMON

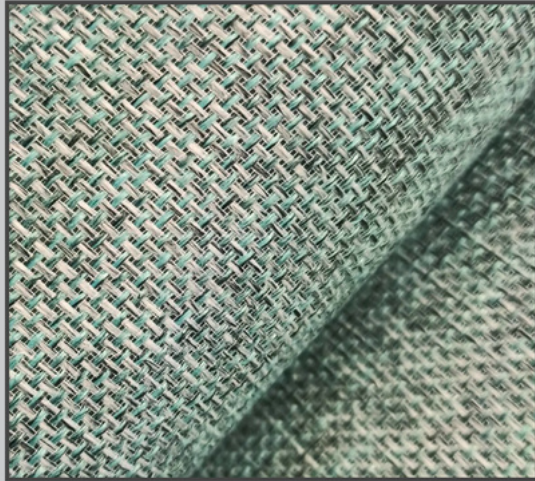


KYOTO BRONZE

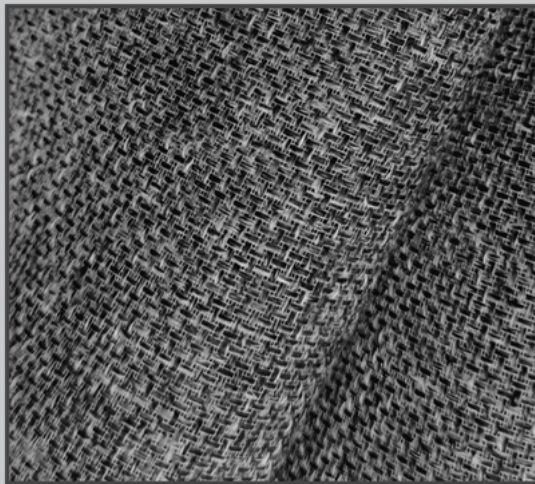




KYOTO PECAN



KYOTO AQUA

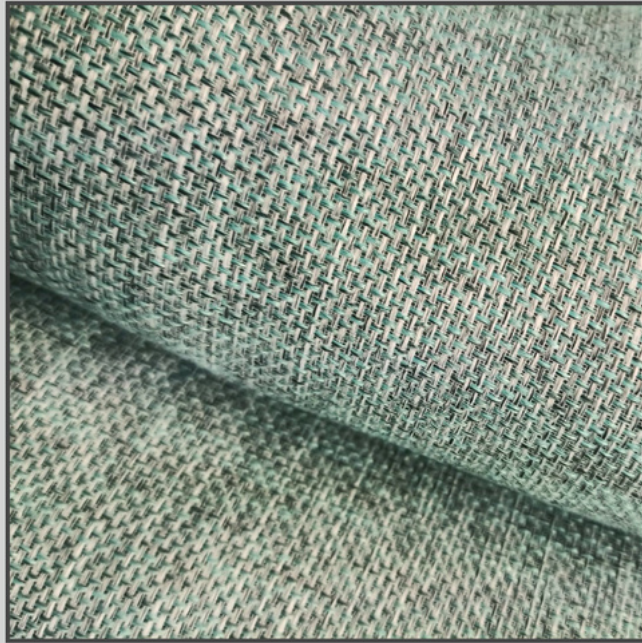


KYOTO COAL





# KYOTO



DESIGN	KYOTO
REPEAT	TEXTURE
WEIGHT	385 GMS APPROX
COMPOSITION	100%POLYSTER FR
USAGE	CURTAIN
LIGHT FASTNESS	4 TO 5
WIDTH	300 CM(2%+/-)



**S9** HOME<sup>®</sup>

DISCLAIMER : COLORS ARE REPRESENTED AS ACCURATELY AS POSSIBLE BUT MAY VARY SLIGHTLY FROM WHAT IS SEEN ON SCREEN